



Chrysanthos®

Color Company Limited

ASTURCERÁMICA



www.chrysanthos.com



UNDERGLAZES



UG001 (A)
WHITE



UG005 (B)
CANARY YELLOW



UG009 (B)
BRIGHT YELLOW



UG013 (B)
CITRUS



UG017 (B)
LOTUS YELLOW



UG021 (B)
FLESH



UG025 (C)
BEIGE



UG029 (B)
PEACH



UG033 (B)
APRICOT



UG037 (C)
BURNT ORANGE



UG041 (C)
SAFFRON



UG045 (C)
MELON



UG049 (C)
MANDARIN



UG053 (C)
PEACH CAMEO



UG057 (A)
CORAL



UG061 (A)
CORAL PINK



UG065 (C)
PERSIMMON



UG069 (A)
CORAL RED



UG071 (C)
ROCKET RED



UG073 (A)
RUBY RED



UG077 (A)
DEEP PLUM



UG081 (A)
BURGUNDY



UG085 (A)
ROSE PINK



UG087 (A)
PETAL PINK



UG089 (A)
CARNATION PINK



UG093 (A)
DEEP ROSE



UG097 (C)
LIGHT JADE



UG101 (B)
JASPER



UG105 (C)
JADE GREEN



UG109 (C)
PEACOCK



UG113 (B)
PARIS GREEN



UG117 (B)
LIME



UG121 (B)
CHARTREUSE



UG125 (B)
MEDIUM GREEN



UG129 (B)
APPLE GREEN



UG133 (B)
OLIVE GREEN



UG137 (C)
FOREST GREEN



UG141 (C)
LEAF GREEN



UG145 (C)
BRUNSWICK GREEN



UG149 (C)
BABY BLUE



UG153 (C)
TURQUOISE



UG157 (C)
SUMMER BLUE



UG161 (C)
ELECTRIC BLUE



UG165 (C)
BRIGHT BLUE



UG169 (C)
COBALT BLUE



UG173 (A)
ORCHID



UG177 (A)
LAVENDER



UG181 (A)
REGENCY PURPLE



UG183 (A)
VIOLA



UG185 (A)
ROYAL PURPLE



UG189 (A)
PURPLE BLUE



UG193 (C)
ART GREY



UG197 (C)
GOLD BROWN



UG199 (C)
MID BROWN



UG201 (A)
REDWOOD



UG204 (A)
TERRACOTTA



UG206 (A)
QIAKELI



UG209 (A)
ANTIQUE BROWN



UG213 (A)
CRIMSON



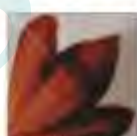
UG216 (C)
COBALT BLACK

1. Firing Range:
A—Cone 06 (999°C) to Cone 6 (1,222°C).
B—Cone 06 (999°C) to Cone 8 (1,263°C).
C—Cone 06 (999°C) to Cone 10 (1,305°C).
2. Sizes: 60 ml, 500 ml, 5 lt.
3. Application: 1 - 3 coats greenware / bisque.
4. Intermixable: Yes.

Colors are reproductions only



ONE STROKES

OS001 (C)
WHITEOS005 (B)
PASTEL SALMONOS009 (B)
SHEER PEACHOS013 (B)
CITRUSOS017 (B)
DAFFODILOS021 (B)
GOLDEN YELLOWOS025 (B)
BURNT ORANGEOS029 (C)
DEEP MANDARINOS033 (C)
DEEP ORANGEOS037 (C)
PERSIMMONOS041 (B)
CORAL PINKOS045 (A)
CORAL REDOS049 (A)
RUBY REDOS053 (B)
ROMANCE REDOS061 (B)
ROYAL REDOS065 (B)
BRICK REDOS069 (C)
PRISM REDOS073 (B)
APRICOT PRESERVEOS077 (A)
CORALOS081 (A)
TERRACOTTAOS085 (A)
ROSE PINKOS089 (A)
DUSKY PINKOS093 (A)
ORCHIDOS097 (A)
MAUVEOS101 (A)
LAVENDEROS105 (A)
BURGUNDYOS109 (A)
CRIMSONOS113 (A)
PURPLEOS117 (A)
ROYAL PURPLEOS121 (B)
LIMEOS125 (C)
LEAF GREENOS129 (B)
OLIVE GREENOS133 (B)
PARIS GREENOS137 (B)
JASPEROS141 (C)
JADE GREENOS145 (C)
PEACOCKOS149 (B)
EMERALD GREENOS153 (C)
GRASS GREENOS157 (C)
BRUNSWICK GREENOS161 (C)
BABY BLUEOS165 (C)
TURQUOISEOS169 (C)
WEDGEWOOD BLUEOS173 (C)
SUMMER BLUEOS177 (C)
SAPPHIRE BLUEOS181 (C)
BRIGHT BLUEOS185 (C)
PRISM BLUEOS189 (C)
COBALT BLUEOS193 (C)
TEALOS197 (C)
SIENNA BROWNOS201 (C)
GOLD BROWNOS203 (A)
QIAOKELIOS204 (A)
ANTIQUÉ BROWNOS209 (C)
GREYOS213 (C)
ART GREYOS216 (C)
COBALT BLACK

1. Firing range: A—Cone 06 (999°C) to Cone 6 (1,222°C); B—Cone 06 (999°C) to Cone 6 (1,263°C); C—Cone 06 (999°C) to Cone 10 (1,305°C).
2. Sizes: 30 ml, 500 ml, 5 lt.
3. Application: 1 - 3 coats greenware / bisque.
4. Intermixable: Yes.

Colors are reproductions only



SUPERIOR GLAZES

1. O = Opaque; S = Semi Transparent; T = Transparent.
2. Firing range: Cone 07 (984°C) - Cone 03 (1,101°C).
3. Sizes: 140 ml, 500 ml, 5 lt, 10 lt.
4. Application: 2 - 3 coats earthenware bisque.
5. Intermixable: Yes.
6. Mix with: FC & SP025.
7. Also available: Powder glazes - ^ = 10 kg.
Dipping glazes - ^^ = 10 lt.

Colors are reproductions only



CAFE COLORS (G)[#]

				<ol style="list-style-type: none"> 1. Firing range: Cone 06 (999°C) - 04 (1,060°C). 2. Sizes: 60 ml, 250 ml, 500 ml. 3. Application: 1 - 3 coats earthenware bisque. 4. Intermixable: Yes. <p>[#] - Cafe Colors available in GLOSS (G) version. Product code suffix "G"</p>		

Colors are reproductions only



FANTASY CRYSTALS



FC001
CLEAR



FC005
WHITE



FC010
YELLOW



FC013
ORANGE



FC015
RED



FC017
BROWN



FC018
VIOLET



FC021
GREEN



FC025
BLUE



FC027
COPPER



FC029
BLACK

1. Firing range: Cone 06 (999°C) to Cone 04 (1,060°C)
2. Sizes: 50 gr, 500 gr.
3. Intermixable: Yes.
4. Mix with: SG & SP025.



CRYSTALLITES



CR001
WHITE



CR005
BRIGHT YELLOW



CR009
GOLDEN



CR013
PERSIMMON



CR017
CORAL RED



CR021
ROSE PINK



CR025
BURGUNDY



CR029
JASPER



CR033
JADE GREEN



CR037
APPLE



CR041
BRUNSWICK GREEN



CR045
TURQUOISE



CR049
SUMMER BLUE



CR053
COBALT BLUE



CR057
IRIS PURPLE



CR061
GREY



CR065
TERRACOTTA



CR069
COBALT BLACK

1. Firing range: Cone 06 (999°C) to Cone 04 (1,060°C)
2. Sizes: 140 ml, 500 ml.
3. Application: 1 - 3 coats greenware / bisque.
4. Intermixable: Yes.



3D TRAILING GLAZES



3D001
WHITE



3D005
YELLOW



3D009
ORANGE



3D013
RED



3D017
GREEN



3D021
BLUE



3D025
BLACK

1. Firing range: Cone 06 (999°C) to Cone 04 (1,060°C).
2. Sizes: 40 ml with applicator, 500 ml.
3. Intermixable: Yes.

Colors are reproductions only



SPECKLED CAFE COLORS



SC001
SNOW WHITE



SC005
TUSK TUSK



SC015
2 PINKY



SC029
ORANGE SUNSET



SC033
YELLOW TERRA



SC041
FLOWER POWER



SC053
YELLOW HAZE



SC069
ABLAZE



SC077
MOCHA



SC109
WHINING



SC125
FIGARO



SC133
TROPICAL WATERS



SC141
SOFT PASTURES



SC144
GREEN DREAM



SC153
BIRDS LIFE



SC157
AQUA MARINA



SC161
BLUE BY YOU



SC165
FANCY PANCY



SC193
RUSTY NAILS



SC197
TUTTO NERO

1. Firing range: Cone 06 (999°C) to Cone 04 (1,060°C). 2. Sizes: 140 ml, 500 ml. 3. Application: 1 - 3 coats earthenware bisque. 4. Intermixable: Yes.



CRACKLE GLAZES



CG001
CLEAR



CG003
WHITE



CG005
CELEDON



CG007
GREEN



CG009
EGYPTIAN BLUE



CG011
BLUE LAGOON



CG013
ITALIAN BLUE

1. Firing range: Cone 06 (999°C) - Cone 04 (1,060°C). 2. Sizes: 140 ml, 500 ml. 3. Application 2 - 3 coats earthenware bisque. 4. Intermixable: Yes.



LOW SHEEN GLAZES



LS001
WHITE



LS005
CREAM



LS009
EGG NOGG



LS013
LEMON YELLOW



LS017
ORANGE



LS021
PRISM RED



LS025
ROSE PINK



LS029
LIME



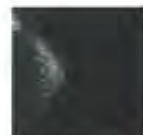
LS033
CHARTREUSE



LS037
JASPER



LS041
GREEN



LS045
BLUE GREEN



LS049
LIGHT BLUE



LS053
TURQUOISE



LS057
PRISM BLUE



LS061
PURPLE



LS065
BROWN



LS069
BLACK



LS073 *
CLEAR

1. Firing range: Cone 06 (999°C) - Cone 04 (1,060°C).
2. Sizes: 140 ml, 500 ml.
3. Application 2 - 3 coats earthenware bisque.
4. Intermixable: Yes.
5. Also available: Dipping glaze - * = 10 lt.

Colors are reproductions only



FANTASY GLAZES



FG001
RHUBARB



FG003
DALMATION



FG006
BLUE EYES



FG009
BUBBLE GUM



FG034
BUMBLE BEE



FG036
LEMONCELLO



FG037
VERMILLION SUNBURST



FG041
SUNDANCE



FG039
AYERS ROCK



FG055
FAIRY FLOSS



FG057
ORIENTAL PRINCESS



FG060
MARBELOUS



FG081
FUCHSIA FANTASTIC



FG084
LADY BIRD



FG121
WINE FIESTA



FG124
BERRY GOOD



FG131
ARCHAIC



FG133
RENAISSANCE



FG135
BILLABONG



FG137
GIDDY GRAPE



FG139
JURASSIC



FG141
ENVY



FG155
CHROMIUM



FG167
EMERALORIUM



FG169
NEPTUNE



FG175
ROYAL AMETHYST



FG177
MAUVIANCE



FG178
PURUSTIC



FG179
TRANQUILITY



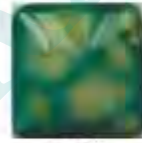
FG181
AURORA



FG183
NEBULA



FG185
DELPHINIUM



FG186
PRIMORDIAL



FG187
STORM



FG188
MUDDLE



FG190
MURANO



FG193
ALGAE



FG200
COSMOS



FG207
ABYSS



FG209
EBONISER

1. Firing range: Cone 06 (999°C) to Cone 04 (1,060°C).
2. Sizes: 140 ml, 500 ml.
3. Application: 1 - 3 coats earthenware bisque.
4. Intermixable: Yes.



FENG SHUI GLAZES



FS145[™]
SHEN DAN LU



FS157[™]
FEICUI LU



FS201[™]
BRONZE METAL



FS205[™]
GUN METAL

1. Firing range: Cone 06 (999°C) - Cone 04 (1,060°C).
2. Sizes: 140 ml, 500 ml.
3. Application 2 - 3 coats earthenware bisque.
4. Intermixable: No.

Pb - Contains Lead.

1. Firing range: Cone 05 (1,046°C) - Cone 03 (1,101°C).
2. Sizes: 140 ml, 500 ml.
3. Application 3 - 4 coats earthenware bisque.
4. Intermixable: No.

Pb - Contains Lead.

Colors are reproductions only



HIGH FIRE GLAZES

						
HF001-O WHITE	HF005-O IVORY	HF009-O CITRUS	HF013-S PUMPKIN	HF017-S APRICOT	HF021-S MANDARIN	HF025-S PEACH
						
HF029-S CORAL	HF033-S CORAL RED	HF037-S BRICK RED	HF041-O PRISM RED	HF045-S CRIMSON	HF049-S PALE PINK	HF053-T ROSE PINK
						
HF057-S DUSKY PINK	HF061-S WISTERIA	HF065-S LIGHT VIOLET	HF069-S VIOLET	HF073-S MAUVE	HF077-S ROYAL PURPLE	HF081-S PURPLE BLUE
						
HF085-O PARIS GREEN	HF089-S JASPER	HF093-S YELLOW GREEN	HF097-O GREEN	HF101-S LIGHT JADE	HF105-S JADE	HF109-S TURQUOISE
						
HF113-S PEACOCK	HF117-S SUNRISE BLUE	HF121-S SUNSET BLUE	HF125-T PACIFIC BLUE	HF129-S BRIGHT BLUE	HF133-S COBALT BLUE	HF137-S MIDNIGHT BLUE
						
HF141-S GOLD BROWN	HF145-S ANTIQUÉ BROWN	HF149-S GREY	HF153-S COBALT BLACK	HF157-T* CLEAR		

1. O = Opaque, S = Semi Transparent, T = Transparent. 2. Firing range: Cone 4 (1,185°C) - Cone 6 (1,222°C). 3. Sizes: 140 ml, 500 ml, 5 lt, 10 lt.
4. Application: 3 coats mid fire bisque. 5. Intermixable; Yes. 6. Also available: Dipping glazes - * = 10 lt.



HIGH FIRE EXOTICS



HE001*
BRONZE METAL



HE005*
GUN METAL



HE101
NEUTRAL



HE105
HONEY ONYX



HE109
ORANGE ONYX



H113
POMEGRANATE



HE117
SEA SPRAY



HE121
LIMESTONE



HE125
MILDEW



HE129
GRANITE



HE133
GREEN AGATE



HE137
PARCHMENT BROWN



HE141
MARBLE BROWN



HE145
SEA AGATE



HE149
BLUE AGATE



HE153
SHALE



HE201*
LOW SHEEN CLEAR



HE205*
LOW SHEEN WHITE



HE209*
LOW SHEEN BLACK



HE301
CRACKLE CLEAR

1. Firing range: Cone 4 (1,186°C) - Cone 6 (1,222°C).
2. Sizes: 140 ml, 500 ml.
3. Application: 2 - 3 coats mid fire bisque.
4. Intermixable: No.
5. Use HE101 to create custom HE by the addition of metal oxides.
6. Also available as dipping glazes - * = 10 l.

Pb - Contains Lead.



UNDERGLAZE PENCILS



UP001 (B)
YELLOW



UP003 (B)
RED



UP005 (A)
BROWN



UP007 (B)
GREEN



UP009 (B)
BLUE



UP011 (B)
BLACK



- LEAD FREE - FOR USE ON BISQUE. 1. Firing range: A. Cone 06 (999°C) - Cone 6 (1,222°C).
B. Cone 06 (999°C) - Cone 10 (1,305°C).
2. Packaging: Single.

Colors are reproductions only